



**PRO.THERM**  
 PROCESS AND THERMAL SYSTEMS  
**STEAM GENERATION, HEAT TRANSFER  
 & ENERGY CONSERVATION SPECIALISTS**

<b>Flue Gas Expansion Joint Inquiry Sheet</b>	<b>Item No. 1</b>	<b>Item No. 2</b>
Quantity		
Equipment Type		
Description of Process Gas		
Location of Expansion Joint		
Flow Rate (LB/HR)		
Flow Rate ACFM		
Abrasive (Yes/No)		
Dewpoint (F)		
Corrosives (Specify Type)		
Normal Temperature (F)		
Maximum Temperature (F)		
Temperature Duration at Max (Hrs.)		
Normal Design Pressure (in. WC)		
Maximum Design Pressure (in. WC)		
Axial Compression Movement (in.)		
Axial Extension Movement (in.)		
Lateral Deflection Movement (in.)		
Angular Rotation Movement (deg.)		
Torsion (deg.)		
Face-to-Face Nominal Length (in.)		
Duct Breach Opening (in.) (L x W)		
Duct Thickness (in)		
Duct Material		
Internal Duct Liner/Baffle (Yes/No)		
Flange ID (in.) (L x W)		
Flange OD (in.) (L x W)		
No. of Holes (Attach Pattern)		
Bolt Circle Diameter (If Round)		
Flange Type (Attach Sketch)		
Frame Type (Select from next page)		
Frame Material		
Flexible Element Style (Circle One)	Flat    Flanged	Flat    Flanged
Flexible Element Material (If Known)		
<b>Required Delivery Date</b>		
<b>Contact Information</b>		
<b>Name:</b>	<b>E-mail:</b>	
<b>Company:</b>	<b>Phone:</b>	
<b>Address:</b>	<b>Cell:</b>	
	<b>Fax:</b>	

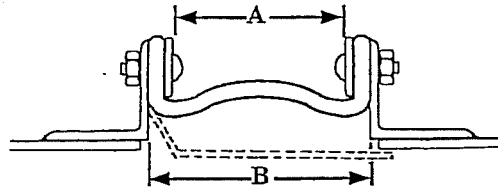
\*Attach Additional Sheets if Necessary.

Protherm Corporation • 11108 South Towne Square • St. Louis, MO 63123-7813  
 (314) 894-6720 • FAX (314) 892-0107 • www.prothermcorp.com

# EXPANSION JOINT FRAME SELECTION AND MOVEMENT CAPABILITIES

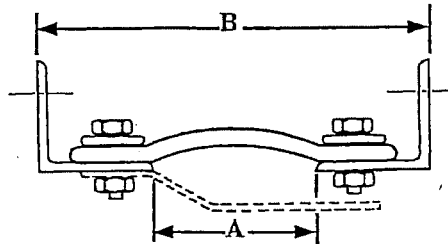
## TYPE 1

- MOLDED "U" SHAPE
- RECTANGULAR, SQUARE OR ROUND CONFIGURATION
- LOW TEMPERATURE APPLICATIONS (BELOW 400°F)



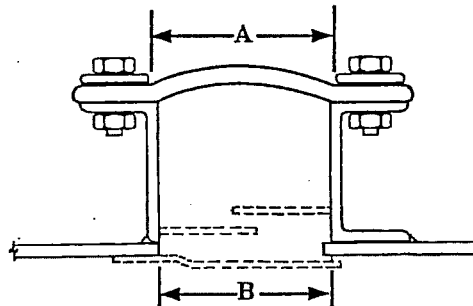
## TYPE 2

- BELT-TYPE FLEXIBLE ELEMENT
- LOW TO MODERATE SERVICE TEMPERATURE
- INTERNAL OR EXTERNAL BELT MOUNTING
- LOW COST INSTALLATION BOLTED OR WELDED
- RECTANGULAR, SQUARE OR ROUND CONFIGURATION
- OPTIONAL BOLT IN LINER



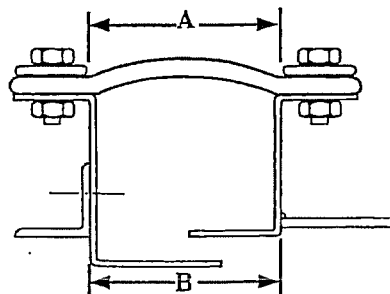
## TYPE 3 B (Bolted) W (Welded)

- BELT-TYPE FLEXIBLE ELEMENT
- LARGE MOVEMENT CAPABILITY
- VARIETY OF WELD-IN LINER ARRANGEMENTS
- RECTANGULAR, SQUARE OR ROUND CONFIGURATION



## TYPE 4 B (Bolted) W (Welded)

- BELT TYPE FLEXIBLE ELEMENT
- LARGE MOVEMENT CAPABILITY
- LOW REPLACEMENT COST OF FLEXIBLE ELEMENT
- HIGH SERVICE TEMPERATURE APPLICATIONS (ABOVE 400°F)



## TYPE 5 B (Bolted) W (Welded)

- BELT-TYPE FLEXIBLE ELEMENT
- LOW COST INSTALLATION WELDED OR FLANGED
- LARGER DUCT OPENINGS
- VARIETY OF WELD-IN LINERS

